

New York State Electric & Gas Corporation

Jennison Transmission Solution Project

Exhibit 4

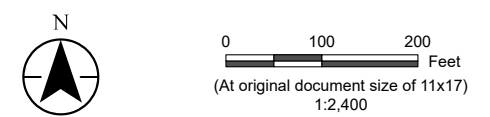
Environmental Impacts

Part 8 of 9



Jennison Transmission Solution Project

- Proposed Right-of-Way
- Field-Delineated Feature**
 - Culvert
 - Ditch
 - Wetland Continuation Line
 - Delineated Stream - State Protected (Class, Standard)
 - Delineated Open Water
 - Delineated Wetland – Federal Jurisdiction
- Mapsheet Match Line
- Road or Highway**
 - Local, Neighborhood, Rural or City Street



Notes
 1. Data Sources: See Figure 4-6 Mapsheet Index notes

Project Location
 Chenango, Delaware, & Otsego Counties, NY

Client/Project
 Jennison Transmission Solution Project
 NYSEG CLCPA Program

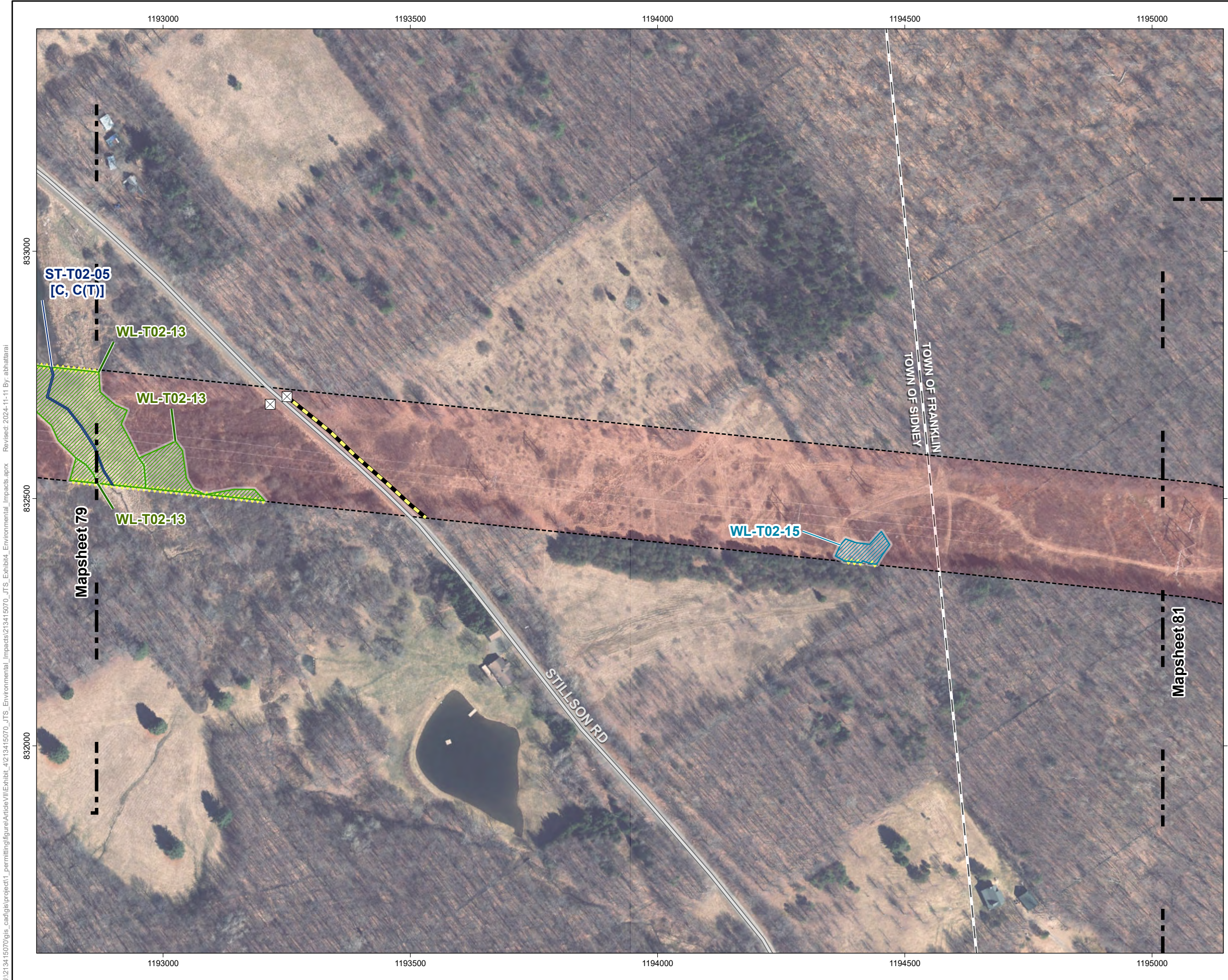
Figure No.
4-6

Title
**Delineated Wetlands & Streams
 Mapsheet 79 of 102**

Prepared by AB on 2024-02-08
 TR by DG on 2024-07-30
 IR by AS on 2024-10-18

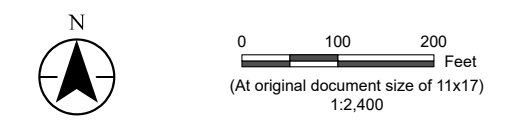
213415070 REVA

U:\213415070\gis_cad\gis\project1\permitting\figure\Antiole\VII\Exhibit_4\213415070_JTS_Environmental_Impacts\Impacts.aprx Revised: 2024-11-11 By: abhattaral



Jennison Transmission Solution Project

- Proposed Right-of-Way
- Field-Delineated Feature**
- Culvert
- Ditch
- Wetland Continuation Line
- Delineated Stream - State Protected (Class, Standard)
- Delineated Wetland – Federal Jurisdiction
- Delineated Wetland – State Jurisdiction
- Mapsheet Match Line
- City or Town Boundary
- Road or Highway**
- Local, Neighborhood, Rural or City Street



Notes
 1. Data Sources: See Figure 4-6 Mapsheet Index notes

Project Location: Chenango, Delaware, & Otsego Counties, NY
 Prepared by AB on 2024-02-08
 TR by DG on 2024-07-30
 IR by AS on 2024-10-18

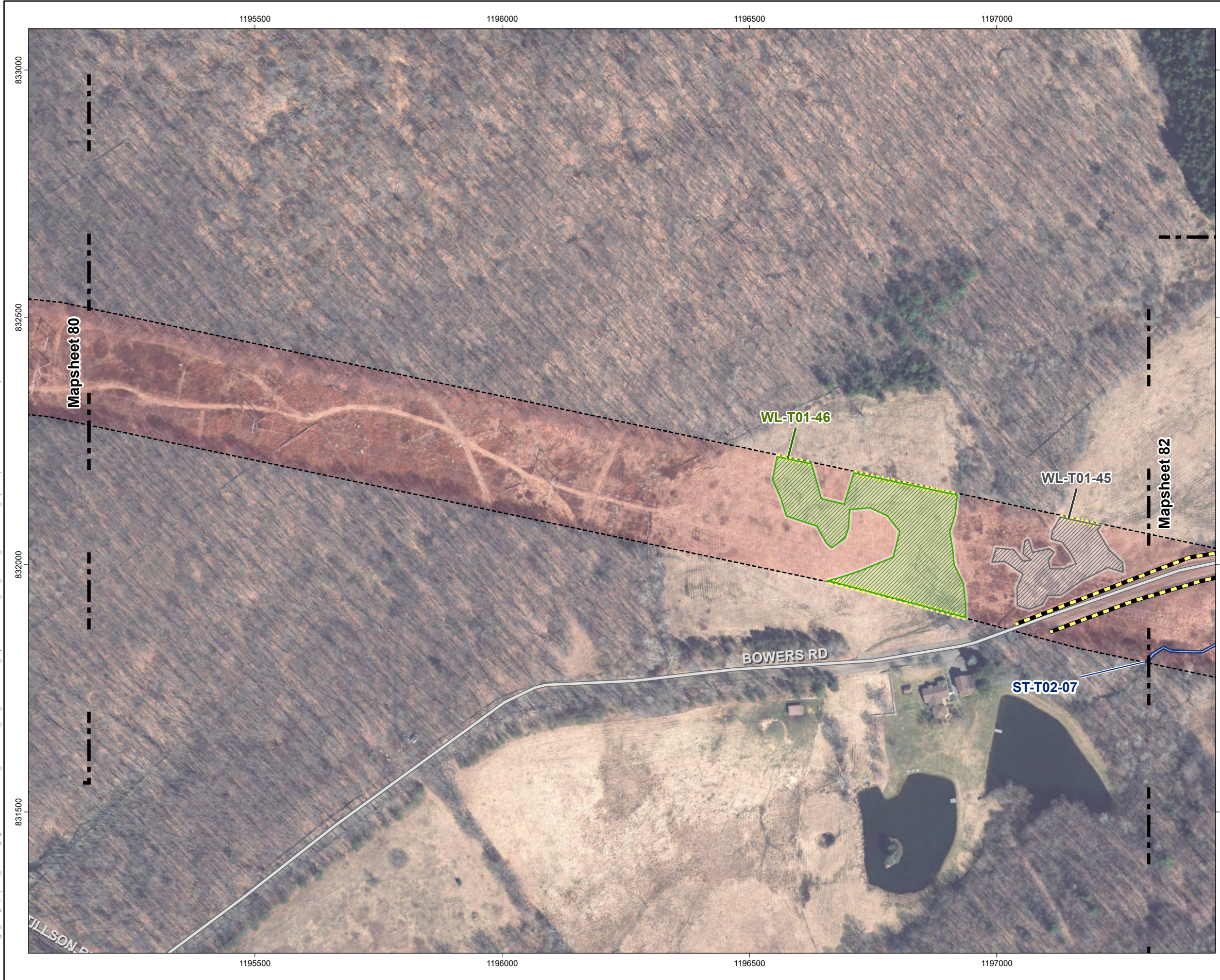
Client/Project: Jennison Transmission Solution Project
 NYSEG CLCPA Program
 213415070 REVA

Figure No. **4-6**

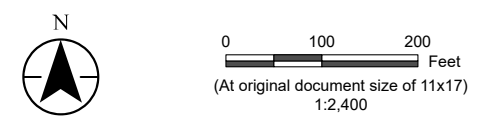
Title

**Delineated Wetlands & Streams
 Mapsheet 80 of 102**

U:\213415070\gis_cad\gis_project1\permitting\figure\Antiole\VII\Exhibit_4\213415070_JTS_Environmental_Impacts\Impacts\213415070_JTS_Environmental_Impacts.aprx Revised: 2024-11-11 By: abhattaral



- Jennison Transmission Solution Project**
- Proposed Right-of-Way
 - Field-Delineated Feature**
 - Ditch
 - Wetland Continuation Line
 - Delineated Stream
 - Delineated Wetland – Federal Jurisdiction
 - Delineated Wetland – Non-Jurisdiction
 - Mapsheet Match Line
 - Road or Highway**
 - Local, Neighborhood, Rural or City Street



Notes
 1. Data Sources: See Figure 4-6 Mapsheet Index notes

Project Location
 Chenango, Delaware, & Otsego Counties, NY

Client/Project
 Jennison Transmission Solution Project
 NYSEG CLCPA Program

Prepared by AB on 2024-02-08
 TR by DG on 2024-07-30
 IR by AS on 2024-10-18

213415070 REVA

Figure No.
4-6

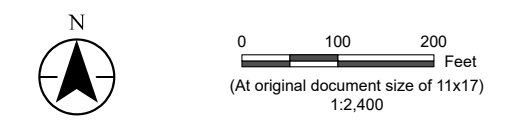
Title
Delineated Wetlands & Streams
Mapsheet 81 of 102

U:\213415070\gis_cad\gis_project1\permitting\figure\Article\11\Exhibit_4\213415070_JTS_Environmental_Impacts\213415070_JTS_Environmental_Impacts.aprx Revised: 2024-11-11 By: abhattaral



Jennison Transmission Solution Project

- Proposed Right-of-Way
- Field-Delineated Feature**
- Ditch
- Wetland Continuation Line
- Delineated Stream
- Delineated Stream - State Protected (Class, Standard)
- Delineated Wetland - Federal/State Jurisdiction
- Mapsheet Match Line
- Road or Highway**
- Local, Neighborhood, Rural or City Street



Notes
 1. Data Sources: See Figure 4-6 Mapsheet Index notes

Project Location
 Chenango, Delaware, & Otsego Counties, NY

Client/Project
 Jennison Transmission Solution Project
 NYSEG CLCPA Program

Prepared by AB on 2024-02-08
 TR by DG on 2024-07-30
 IR by AS on 2024-10-18

213415070 REVA

Figure No.
4-6

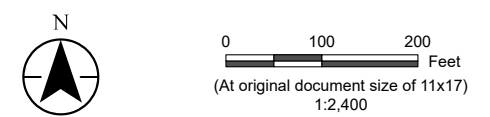
Title
Delineated Wetlands & Streams
Mapsheet 82 of 102

U:\213415070\gis_cad\gis_project1\permitting\figure\Antiole\11\Exhibit_4\213415070_JTS_Environmental_Impacts.aprx Revised: 2024-11-11 By: abhattalari



Jennison Transmission Solution Project

- Proposed Right-of-Way
- Field-Delineated Feature**
- Ditch
- Wetland Continuation Line
- Delineated Stream - State Protected (Class, Standard)
- Delineated Wetland – Federal/State Jurisdiction
- Delineated Wetland – Non-Jurisdiction
- Mapsheet Match Line
- Road or Highway**
- Local, Neighborhood, Rural or City Street



Notes
 1. Data Sources: See Figure 4-6 Mapsheet Index notes

Project Location
 Chenango, Delaware, & Otsego Counties, NY

Client/Project
 Jennison Transmission Solution Project
 NYSEG CLCPA Program

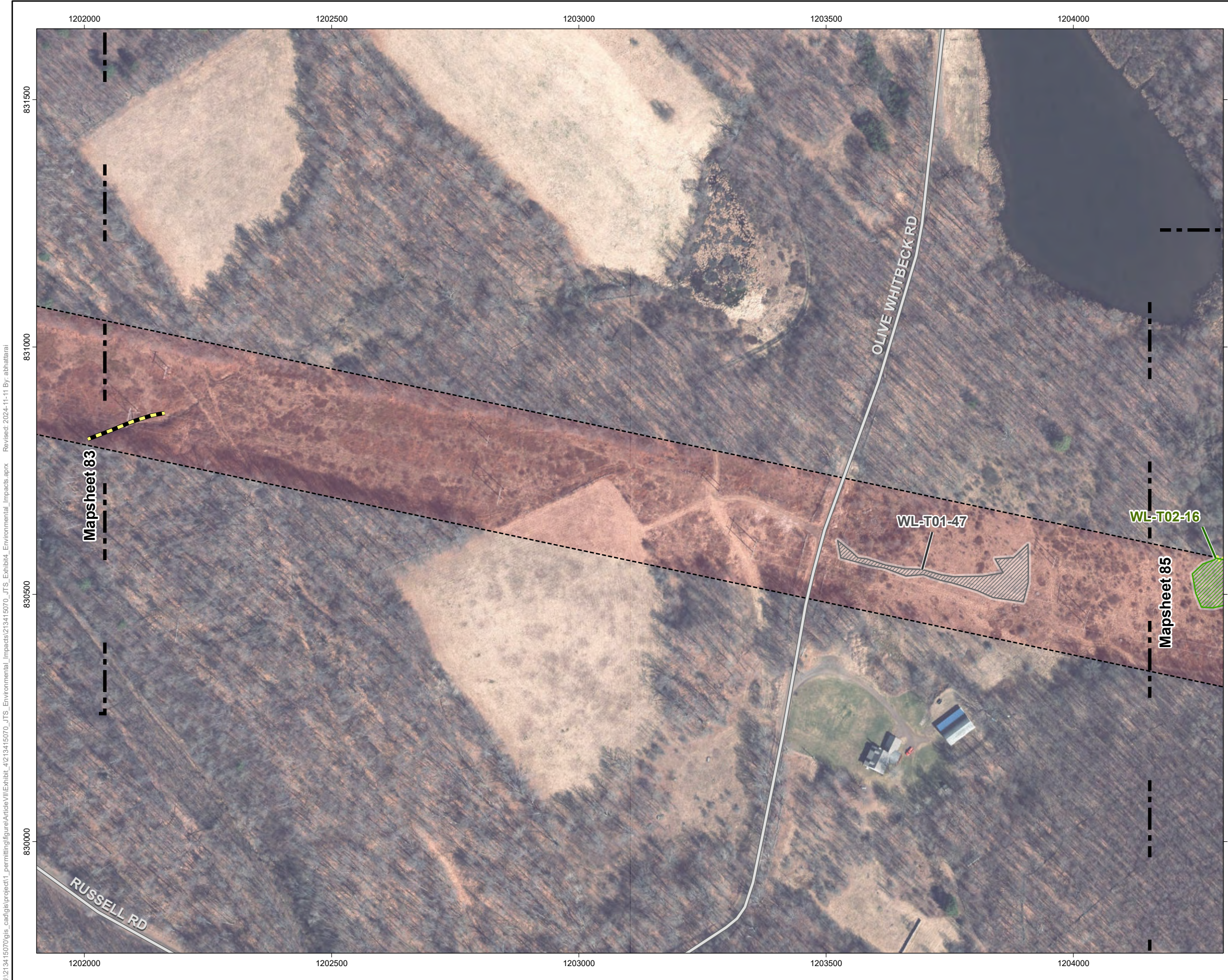
Figure No.
4-6

Title
**Delineated Wetlands & Streams
 Mapsheet 83 of 102**

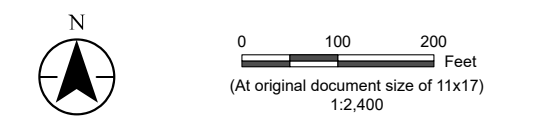
Prepared by AB on 2024-02-08
 TR by DG on 2024-07-30
 IR by AS on 2024-10-18

213415070 REVA

U:\213415070\gis_cad\gis\project1\permitting\figure\Antiole VII\Exhibit_4\213415070_JTS_Environmental_Impacts.aprx Revised: 2024-11-11 By: abhattaral



- Jennison Transmission Solution Project**
- Proposed Right-of-Way
 - Field-Delineated Feature**
 - Ditch
 - Wetland Continuation Line
 - Delineated Wetland – Federal Jurisdiction
 - Delineated Wetland – Non-Jurisdiction
 - Mapsheet Match Line
 - Road or Highway**
 - Local, Neighborhood, Rural or City Street



Notes
 1. Data Sources: See Figure 4-6 Mapsheet Index notes

Project Location
 Chenango, Delaware, & Otsego Counties, NY

Client/Project
 Jennison Transmission Solution Project
 NYSEG CLCPA Program

Prepared by AB on 2024-02-08
 TR by DG on 2024-07-30
 IR by AS on 2024-10-18

213415070 REVA

Figure No.
4-6

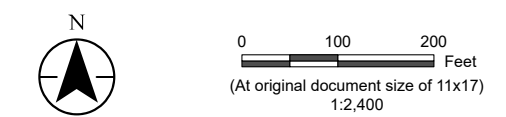
Title
**Delineated Wetlands & Streams
 Mapsheet 84 of 102**

U:\213415070\gis_cad\gis\project1\permitting\figure\Article VII\Exhibit_4\213415070_JTS_Environmental_Impacts.aprx Revised: 2024-11-11 By: abhattaral



Jennison Transmission Solution Project

- Proposed Right-of-Way
- Field-Delineated Feature**
- Wetland Continuation Line
- Delineated Wetland – Federal Jurisdiction
- Mapsheet Match Line



Notes
 1. Data Sources: See Figure 4-6 Mapsheet Index notes

Project Location
 Chenango, Delaware, & Otsego Counties, NY

Client/Project
 Jennison Transmission Solution Project
 NYSEG CLCPA Program

Figure No.
4-6

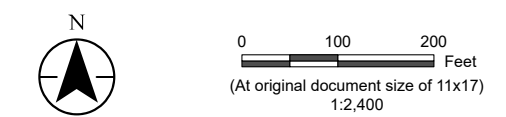
Title
**Delineated Wetlands & Streams
 Mapsheet 85 of 102**

U:\213415070\gis_cad\gis\project1\permitting\figure\Antioch\11\Exhibit_4\213415070_JTS_Environmental_Impacts\1213415070_JTS_Environmental_Impacts.aprx Revised: 2024-11-11 By: abhattaral



Jennison Transmission Solution Project

- Proposed Right-of-Way
- Mapsheet Match Line
- Road or Highway**
 - Local, Neighborhood, Rural or City Street



Notes
 1. Data Sources: See Figure 4-6 Mapsheet Index notes

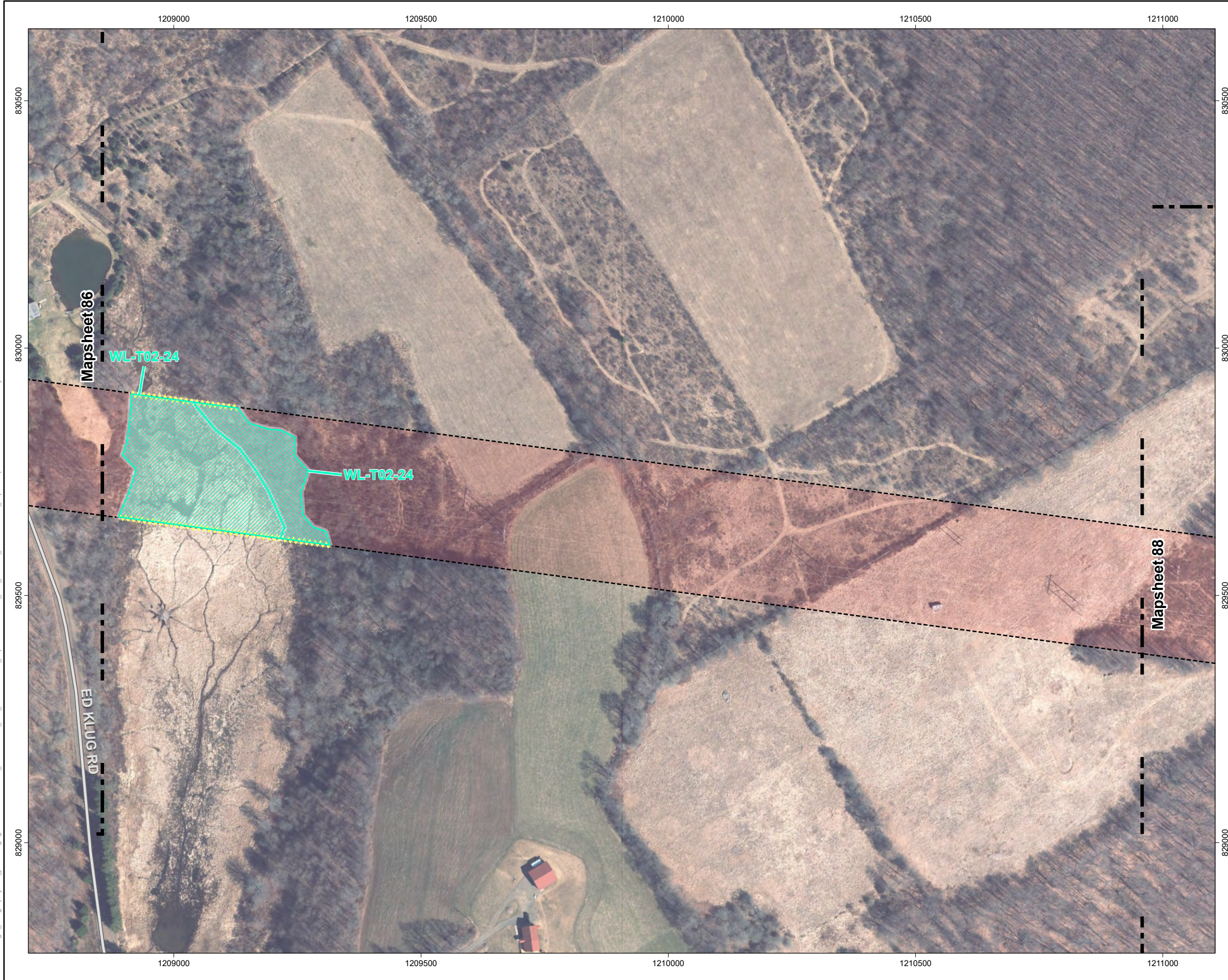
Project Location
 Chenango, Delaware, & Otsego Counties, NY

Client/Project
 Jennison Transmission Solution Project
 NYSEG CLCPA Program

Figure No.
4-6

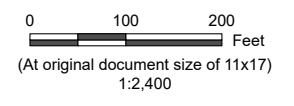
Title
**Delineated Wetlands & Streams
 Mapsheet 86 of 102**

U:\213415070\gis_cad\gis_project1\permitting\figure\Antiole\VIII\Exhibit_4\213415070_JTS_Environmental_Impacts\213415070_JTS_Environmental_Impacts.aprx Revised: 2024-11-11 By: abhattaral



Jennison Transmission Solution Project

- Proposed Right-of-Way
- Field-Delineated Feature**
- Wetland Continuation Line
- Delineated Wetland – Federal/State Jurisdiction
- Mapsheet Match Line
- Road or Highway**
- Local, Neighborhood, Rural or City Street



Notes
 1. Data Sources: See Figure 4-6 Mapsheet Index notes

Project Location
 Chenango, Delaware, & Otsego Counties, NY

Client/Project
 Jennison Transmission Solution Project
 NYSEG CLCPA Program

Prepared by AB on 2024-02-08
TR by DG on 2024-07-30
IR by AS on 2024-10-18

213415070 REVA

Figure No.
4-6

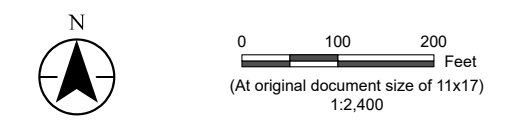
Title
**Delineated Wetlands & Streams
 Mapsheet 87 of 102**

U:\213415070\gis_cad\gis\project1\permitting\figure\Antiole\VI\Exhibit_4\213415070_JTS_Environmental_Impacts\1\Exhibit_4\213415070_JTS_Environmental_Impacts.aprx Revised: 2024-11-11 By: abhattalari



Jennison Transmission Solution Project

- Proposed Right-of-Way
- Field-Delineated Feature**
 - Culvert
 - Ditch
 - Wetland Continuation Line
 - Delineated Stream - State Protected (Class, Standard)
 - Delineated Wetland – Federal Jurisdiction
- Mapsheet Match Line
- Road or Highway**
 - Local, Neighborhood, Rural or City Street



Notes
 1. Data Sources: See Figure 4-6 Mapsheet Index notes

Project Location
 Chenango, Delaware, & Otsego Counties, NY

Client/Project
 Jennison Transmission Solution Project
 NYSEG CLCPA Program

Prepared by AB on 2024-02-08
 TR by DG on 2024-07-30
 IR by AS on 2024-10-18

213415070 REVA

Figure No.
4-6

Title
Delineated Wetlands & Streams
Mapsheet 88 of 102

U:\213415070\gis_cad\gis\project1\permitting\figure\Antiole\VII\Exhibit_4\213415070_JTS_Environmental_Impacts.aprx Revised: 2024-11-11 By: abhattalari

U:\213415070\gis_cad\gis\project1\permitting\figure\Antiole VII\Exhibit_4\213415070_JTS_Environmental_Impacts\213415070_JTS_Environmental_Impacts.aprx Revised: 2024-11-11 By: abhattaral



Jennison Transmission Solution Project

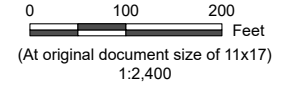
Proposed Right-of-Way

Field-Delineated Feature

- ☒ Culvert
- Ditch
- Wetland Continuation Line
- ▨ Delineated Wetland – Non-Jurisdiction
- Mapsheet Match Line

Road or Highway

— Local, Neighborhood, Rural or City Street



Notes
1. Data Sources: See Figure 4-6 Mapsheet Index notes

Project Location: Chenango, Delaware, & Otsego Counties, NY
Prepared by AB on 2024-02-08
TR by DG on 2024-07-30
IR by AS on 2024-10-18

Client/Project: Jennison Transmission Solution Project
213415070 REVA

NYSEG CLCPA Program

Figure No.

4-6

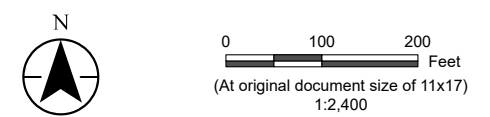
Title

**Delineated Wetlands & Streams
Mapsheet 89 of 102**



Jennison Transmission Solution Project

- Proposed Right-of-Way
- Field-Delineated Feature**
 - Culvert
 - Ditch
 - Delineated Stream - State Protected (Class, Standard)
 - Delineated Open Water
- Mapsheet Match Line
- Road or Highway**
 - Local, Neighborhood, Rural or City Street



Notes
 1. Data Sources: See Figure 4-6 Mapsheet Index notes

Project Location
 Chenango, Delaware, & Otsego Counties, NY

Client/Project
 Jennison Transmission Solution Project
 NYSEG CLCPA Program

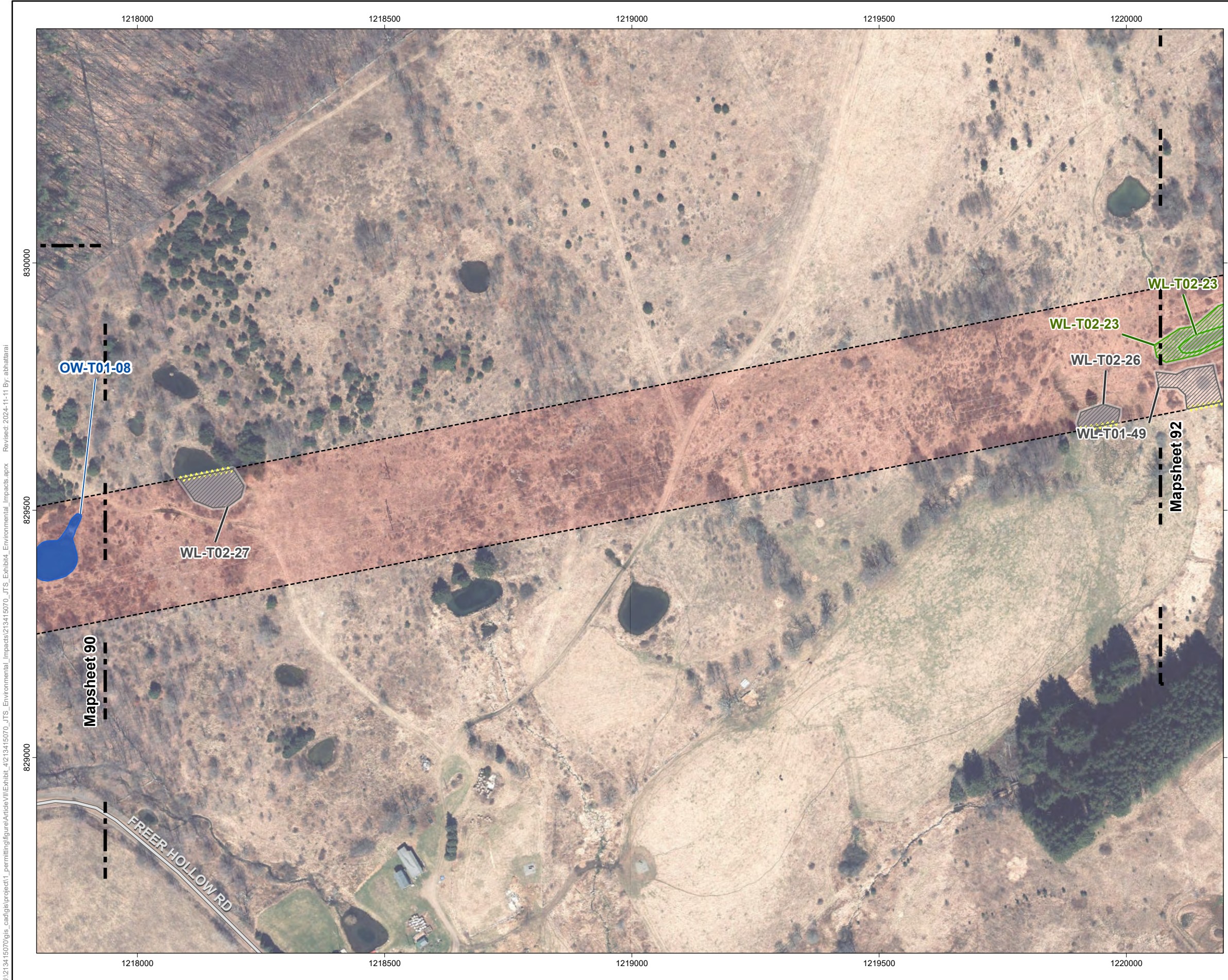
Figure No.
4-6

Title
**Delineated Wetlands & Streams
 Mapsheet 90 of 102**

Prepared by AB on 2024-02-08
 TR by DG on 2024-07-30
 IR by AS on 2024-10-18

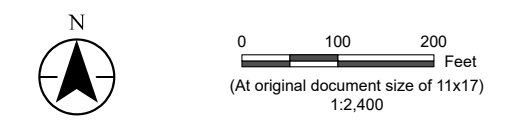
213415070 REVA

U:\213415070\gis_cad\gis_project1\permitting\figure\Antiole\11\Exhibit_4\213415070_JTS_Environmental_Impacts.aprx Revised: 2024-11-11 By: abhattaral



Jennison Transmission Solution Project

- Proposed Right-of-Way
- Field-Delineated Feature**
- Wetland Continuation Line
- Delineated Open Water
- Delineated Wetland – Federal Jurisdiction
- Delineated Wetland – Non-Jurisdiction
- Mapsheet Match Line
- Road or Highway**
- Local, Neighborhood, Rural or City Street



Notes
 1. Data Sources: See Figure 4-6 Mapsheet Index notes

Project Location
 Chenango, Delaware, & Otsego Counties, NY

Client/Project
 Jennison Transmission Solution Project
 NYSEG CLCPA Program

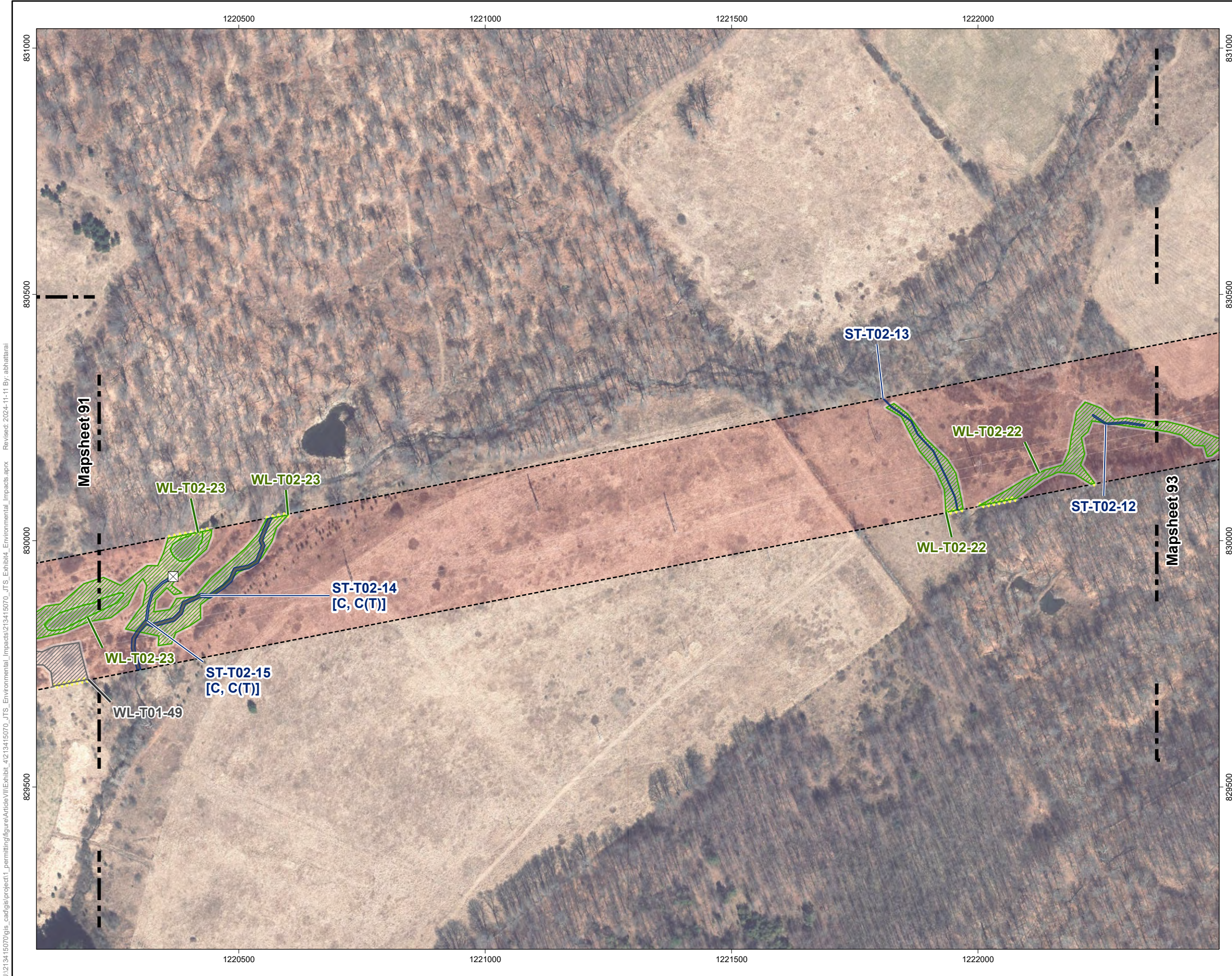
Prepared by
 AB on 2024-02-08
 TR by DG on 2024-07-30
 IR by AS on 2024-10-18

213415070 REVA

Figure No.
4-6

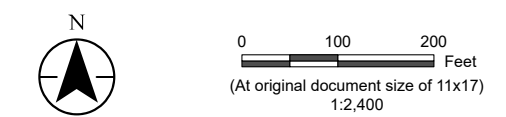
Title
Delineated Wetlands & Streams
Mapsheet 91 of 102

U:\213415070\gis_cad\gis_project1\permitting\figure\Antiole\VII\Exhibit_4\213415070_JTS_Environmental_Impacts\Impacts.aprx Revised: 2024-11-11 By: abhtalaral



Jennison Transmission Solution Project

- Proposed Right-of-Way
- Field-Delineated Feature**
- Culvert
- Wetland Continuation Line
- Delineated Stream
- Delineated Stream - State Protected (Class, Standard)
- Delineated Wetland – Federal Jurisdiction
- Delineated Wetland – Non-Jurisdiction
- Mapsheet Match Line



Notes
 1. Data Sources: See Figure 4-6 Mapsheet Index notes

Project Location
 Chenango, Delaware, & Otsego Counties, NY

Client/Project
 Jennison Transmission Solution Project
 NYSEG CLCPA Program

Figure No.
4-6





Title
**Delineated Wetlands & Streams
 Mapsheet 92 of 102**

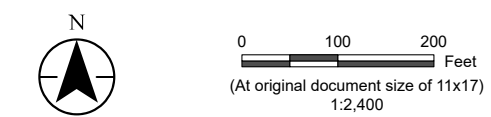
Prepared by AB on 2024-02-08
TR by DG on 2024-07-30
IR by AS on 2024-10-18

213415070 REVA

U:\213415070\gis_cad\gis_project1\permitting\figure\Artioe\VI\Exhibit_4\213415070_JTS_Environmental_Impacts.aprx Revised: 2024-11-11 By: abhattalari

Jennison Transmission Solution Project

-  Proposed Right-of-Way
- Field-Delineated Feature**
-  Delineated Wetland – Federal Jurisdiction
-  Mapsheet Match Line
-  City or Town Boundary



Notes
1. Data Sources: See Figure 4-6 Mapsheet Index notes

Project Location: Chenango, Delaware, & Otsego Counties, NY
Prepared by AB on 2024-02-08
TR by DG on 2024-07-30
IR by AS on 2024-10-18

Client/Project: Jennison Transmission Solution Project
NYSEG CLCPA Program

Figure No. **4-6**

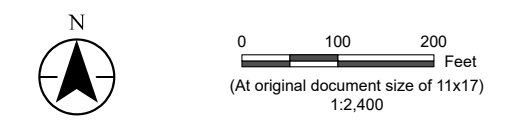
Title: **Delineated Wetlands & Streams
Mapsheet 93 of 102**

U:\213415070\gis_cad\gis\project1\permitting\figure\Antiole\VIII\Exhibit_4\213415070_JTS_Environmental_Impacts\Impacts.aprx Revised: 2024-11-11 By: abhattalari



Jennison Transmission Solution Project

- Proposed Right-of-Way
- Field-Delineated Feature**
- Wetland Continuation Line
- Delineated Stream - State Protected (Class, Standard)
- Delineated Wetland - Federal Jurisdiction
- Mapsheet Match Line
- City or Town Boundary
- Road or Highway**
- Local, Neighborhood, Rural or City Street



Notes
 1. Data Sources: See Figure 4-6 Mapsheet Index notes

Project Location
 Chenango, Delaware, & Otsego Counties, NY

Client/Project
 Jennison Transmission Solution Project
 NYSEG CLCPA Program

Prepared by
 AB on 2024-02-08
 TR by DG on 2024-07-30
 IR by AS on 2024-10-18

213415070 REVA

Figure No.
4-6

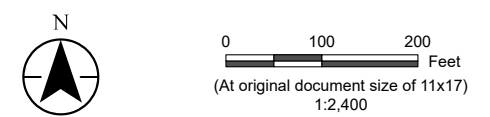
Title
Delineated Wetlands & Streams
Mapsheet 94 of 102

U:\213415070\gis_cad\gis_project1\permitting\figure\Antiole\11\Exhibit_4\213415070_JTS_Environmental_Impacts.aprx Revised: 2024-11-11 By: abhattalal



Jennison Transmission Solution Project

- Proposed Right-of-Way
- Mapsheet Match Line
- City or Town Boundary
- Road or Highway**
- Local, Neighborhood, Rural or City Street



Notes
1. Data Sources: See Figure 4-6 Mapsheet Index notes

<i>Project Location</i> Chenango, Delaware, & Otsego Counties, NY	<i>Prepared by</i> AB on 2024-02-08 <i>TR by</i> DG on 2024-07-30 <i>IR by</i> AS on 2024-10-18
<i>Client/Project</i> Jennison Transmission Solution Project NYSEG CLCPA Program	<i>213415070 REVA</i>

Figure No.
4-6

Title

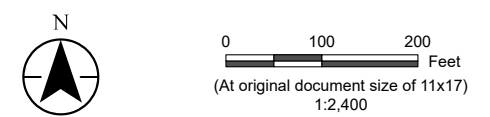
**Delineated Wetlands & Streams
Mapsheet 95 of 102**

U:\213415070\gis_cad\gis\project1_permitting\figure\Antiole\VII\Exhibit_4\213415070_JTS_Environmental_Impacts.aprx Revised: 2024-11-11 By: abhattaral



Jennison Transmission Solution Project

- Proposed Right-of-Way
- Field-Delineated Feature**
- Culvert
- Ditch
- Wetland Continuation Line
- Delineated Wetland – Federal Jurisdiction
- Mapsheet Match Line
- Road or Highway**
- Local, Neighborhood, Rural or City Street



Notes
 1. Data Sources: See Figure 4-6 Mapsheet Index notes

Project Location
 Chenango, Delaware, & Otsego Counties, NY

Client/Project
 Jennison Transmission Solution Project
 NYSEG CLCPA Program

Figure No.
4-6

Title
**Delineated Wetlands & Streams
 Mapsheet 96 of 102**

U:\213415070\gis_cad\gis_project1\permitting\figure\Antioe\11\Exhibit_4\213415070_JTS_Environmental_Impacts.aprx Revised: 2024-11-11 By: abhattaral

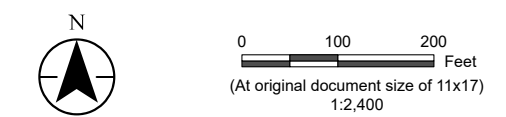
U:\213415070\gis_cad\gis\project1_permitting\figure\Antiole\11\Exhibit_4\213415070_JTS_Environmental_Impacts\1213415070_JTS_Environmental_Impacts.aprx Revised: 2024-11-11 By: abhattalal



Jennison Transmission Solution Project

Proposed Right-of-Way

Mapsheet Match Line



Notes
1. Data Sources: See Figure 4-6 Mapsheet Index notes

Project Location
Chenango, Delaware, & Otsego Counties, NY

Prepared by AB on 2024-02-08
TR by DG on 2024-07-30
IR by AS on 2024-10-18

Client/Project
Jennison Transmission Solution Project
NYSEG CLCPA Program

213415070 REVA

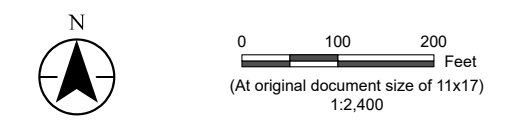
Figure No.
4-6

Title
Delineated Wetlands & Streams
Mapsheet 97 of 102



Jennison Transmission Solution Project

- Proposed Right-of-Way
- Field-Delineated Feature**
 - Culvert
 - Ditch
 - Wetland Continuation Line
 - Delineated Stream - State Protected (Class, Standard)
 - Delineated Open Water
 - Delineated Wetland – Federal Jurisdiction
- Mapsheet Match Line
- Road or Highway**
 - Local, Neighborhood, Rural or City Street



Notes
 1. Data Sources: See Figure 4-6 Mapsheet Index notes

Project Location
 Chenango, Delaware, & Otsego Counties, NY

Client/Project
 Jennison Transmission Solution Project
 NYSEG CLCPA Program

Figure No.
4-6

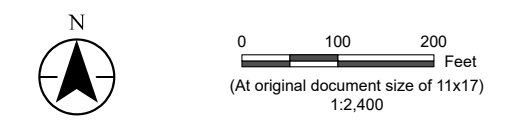
Title
**Delineated Wetlands & Streams
 Mapsheet 98 of 102**

U:\213415070\gis_cad\gis\project1\permitting\figure\Antioe\VII\Exhibit_4\213415070_JTS_Environmental_Impacts.aprx Revised: 2024-11-11 By: abhattaral



Jennison Transmission Solution Project

- Proposed Right-of-Way
- Mapsheet Match Line
- Road or Highway**
- Local, Neighborhood, Rural or City Street



Notes
 1. Data Sources: See Figure 4-6 Mapsheet Index notes

Project Location
 Chenango, Delaware, & Otsego Counties, NY

Prepared by AB on 2024-02-08
 TR by DG on 2024-07-30
 IR by AS on 2024-10-18

Client/Project
 Jennison Transmission Solution Project
 NYSEG CLCPA Program

Client/Project 213415070 REVA

Figure No.
4-6

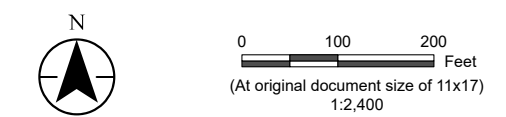
Title
**Delineated Wetlands & Streams
 Mapsheet 99 of 102**

U:\213415070\gis_cad\gis_project1\permitting\figure\Antiole\VII\Exhibit_4\213415070_JTS_Environmental_Impacts\213415070_JTS_Environmental_Impacts.aprx Revised: 2024-11-11 By: abhattalari



Jennison Transmission Solution Project

- Proposed Right-of-Way
- Mapsheet Match Line
- Road or Highway**
 - Local, Neighborhood, Rural or City Street



Notes
 1. Data Sources: See Figure 4-6 Mapsheet Index notes

Project Location
 Chenango, Delaware, & Otsego Counties, NY

Client/Project
 Jennison Transmission Solution Project
 NYSEG CLCPA Program







Figure No.
4-6

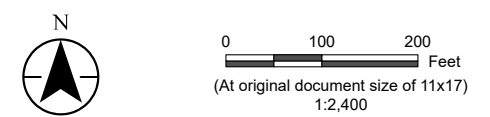
Title
**Delineated Wetlands & Streams
 Mapsheet 100 of 102**

U:\213415070\gis_cad\gis_project1\permitting\figure\Article\11\Exhibit_4\213415070_JTS_Environmental_Impacts.aprx Revised: 2024-11-11 By: abhattalari

U:\213415070\gis_cad\gis_project1\permitting\figure\Antioe\VII\Exhibit_4\213415070_JTS_Environmental_Impacts\213415070_JTS_Exhibit_Environmental_Impacts.aprx Revised: 2024-11-11 By: abhattalari

Jennison Transmission Solution Project

-  Proposed Right-of-Way
- Field-Delineated Feature**
 -  Wetland Continuation Line
 -  Delineated Stream - State Protected (Class, Standard)
 -  Delineated Wetland - Federal Jurisdiction
-  Mapsheet Match Line
- Road or Highway**
 -  Local, Neighborhood, Rural or City Street



Notes
1. Data Sources: See Figure 4-6 Mapsheet Index notes

<i>Project Location</i> Chenango, Delaware, & Otsego Counties, NY	<i>Prepared by</i> AB on 2024-02-08 TR by DG on 2024-07-30 IR by AS on 2024-10-18
<i>Client/Project</i> Jennison Transmission Solution Project NYSEG CLCPA Program	213415070 REVA

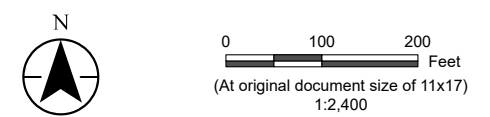
Figure No.
4-6

Title
**Delineated Wetlands & Streams
Mapsheet 101 of 102**



Jennison Transmission Solution Project

- Eastern Terminus
- Proposed Right-of-Way
- Field-Delineated Feature**
- Wetland Continuation Line
- Delineated Wetland – Federal Jurisdiction
- Mapsheet Match Line
- City or Town Boundary



Notes
 1. Data Sources: See Figure 4-6 Mapsheet Index notes

Project Location
 Chenango, Delaware, & Otsego Counties, NY

Client/Project
 Jennison Transmission Solution Project
 NYSEG CLCPA Program

Prepared by AB on 2024-02-08
TR by DG on 2024-07-30
IR by AS on 2024-10-18

213415070 REVA

Figure No.
4-6

Title
Delineated Wetlands & Streams
Mapsheet 102 of 102

U:\213415070\gis_cad\gis_project1\permitting\figure\Antioe\11\Exhibit_4\213415070_JTS_Environmental_Impacts\1213415070_JTS_Environmental_Impacts.aprx Revised: 2024-11-11 By: abhattaral

This page intentionally left blank.